

A man in a dark blue suit and light blue shirt is riding a black and orange electric scooter. He is smiling and looking towards the camera. The background shows a city square with modern buildings and a sign that reads "BAHNHOF POTSDAMER PLATZ".

Micromobility

The Next Big Thing

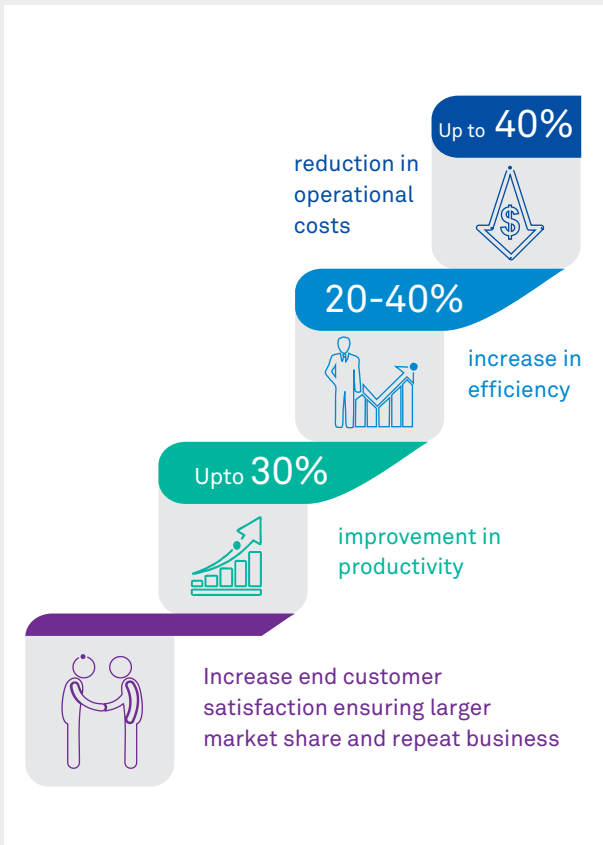
Micromobility Hailing Services are here to stay but challenges such as scalability, changing rider needs and reducing operational costs remain. Wipro's distinctive offerings help businesses manage these challenges and retain focus on their core functions. We provide an integrated solution to handle changing rider needs, manage seasonality and handle fraud along with finance & accounting and human resource services.

Key Takeaways

- Innovative new age delivery model to help you be more nimble, reduce costs and arrest revenue leakages
- Wide ranging solutions to improve business profitability, scalability and sustainability through automated technology solutions and domain expertise
- Streamline processes to drive business value and performance through business driven objectives and process excellence projects

Helping customers in their journey to 'reinvent' their business and operating models with our digital first approach and best in class execution

Key Benefit



We bring an integrated perspective and provide end-to-end services leveraging our robust delivery framework

- Open Street Maps – Navigation services such as labeling, curation, mapping, road classification, and more
- Trust & safety services like fraud detection, investigation, recovery, high risk transactions, and beyond

Features

Our offerings focused on micromobility companies include:

- Customer service via chat, email, web support, social media, phone, and other such mediums



Wipro Limited
Doddakannelli, Sarjapur Road,
Bangalore-560 035,
India

Tel: +91 (80) 2844 0011
Fax: +91 (80) 2844 0256

wipro.com

Wipro Limited (NYSE: WIT, BSE: 507685, NSE: WIPRO) is a leading global information technology, consulting and business process services company. We harness the power of cognitive computing, hyper-automation, robotics, cloud, analytics and emerging technologies to help our clients adapt to the digital world and make them successful. A company recognized globally for its

comprehensive portfolio of services, strong commitment to sustainability and good corporate citizenship, we have over 180,000 dedicated employees serving clients across six continents. Together, we discover ideas and connect the dots to build a better and a bold new future.

For more information, please write to us at info@wipro.com

